

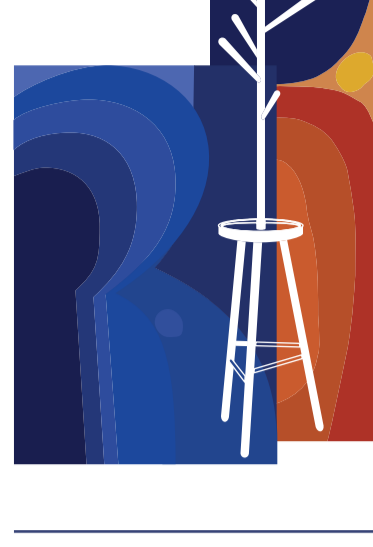


The 60 Years of Design collection celebrates Habitat's 60th birthday, with 60 exclusive design stories curated for the modern home, championing our past, present and future.

We have united our in-house design studio with top design minds, conceiving new and thoughtful pieces that represent future collectibles and the next generation of design, as well as reimagined classics from the archives. The collection will be available online at habitat.co.uk and argos.co.uk, and in selected Sainsbury's stores from May.

More information on the 60 Years of Design collection please contact: habitat@camronglobal.com

habitat



RIPPLE
Runner Rug 66x200cm,
£75

Blending inspiration from 1970s textile design with Simone Brewster's hand paintings based on the female form, this collection of ripple rugs add a splash of vibrant colour to interior spaces.
By Simone Brewster

RIPPLE
Multi Rug 120x190cm,
£140

Blending inspiration from 1970s textile design with Simone Brewster's hand paintings based on the female form, this collection of ripple rugs add a splash of vibrant colour to interior spaces.
By Simone Brewster

RIPPLE
Blue Rug 160x230cm,
£295

Blending inspiration from 1970s textile design with Simone Brewster's hand paintings based on the female form, this collection of ripple rugs add a splash of vibrant colour to interior spaces.
By Simone Brewster

TWIGGY
Oak coat stand,
£125

Originally introduced in 2012, this standalike three-legged coat stand has a quirky charm and is made from FSC solid oak timber.
By Habitat Design Studio Archive

KAYA
Side table,
£65
Coffee Table,
£90

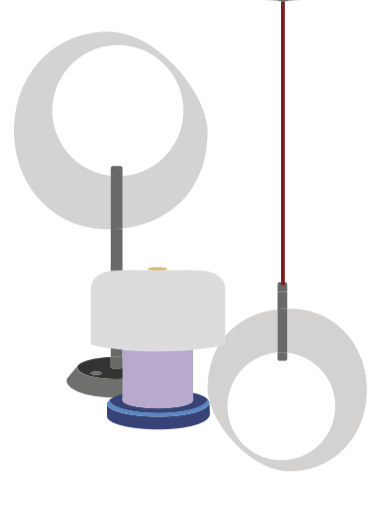
This playful table collection is made from handwoven rattan in shapes designed to reflect the free-flowing forms of nature, evocative of winter woodland walks.
By Habitat Designer Will Hudson

YAKKER
Coffee Table Oak,
£350

Crafted from solid FSC oak, the liberal proportions, on show joints and generous spacing between elements highlight the harmony and beauty of the tactile wood grain and craftsmanship.
By Guy Selwood-Misler

YAKKER
Sideboard Oak,
£695

Crafted from solid FSC oak, the liberal proportions, on show joints and generous spacing between elements highlight the harmony and beauty of the tactile wood grain and craftsmanship.
By Guy Selwood-Misler



COMPASS
Table Lamp,
£75
Pendant Light,
£75

Pipes light through a transparent geometric loop, dispersing a soft, ambient glow in the form of an infinity loop.
By Sebastian Conran

ELLIPSE
Ceiling Light Grey,
£95
Ceiling Light Brass,
£115

Designed to project patterns onto the ceiling via its flying saucer shape that discreetly conceals the bulb from direct view. The adjustable cable allows ambient light to be hung in a variety of living settings.
By Sebastian Conran

HUB
Table Lamp,
£75
Pendant Light,
£75

The natural beehive shaped light is a large blown glass ribbed orb inspired by the renowned Monsieur Bibendum, in a nod to Habitat founder Terence Conran's flagship store at Michelin House.
By Sebastian Conran

CHAMBER
Candle Light Bedside Lamp,
£38

A modern twist on the classic bedside candle holder, with battery-powered dimmable light that gives a translucent glow for up to eight hours.
By Sebastian Conran

PORTOBELLO
Table Light,
£45

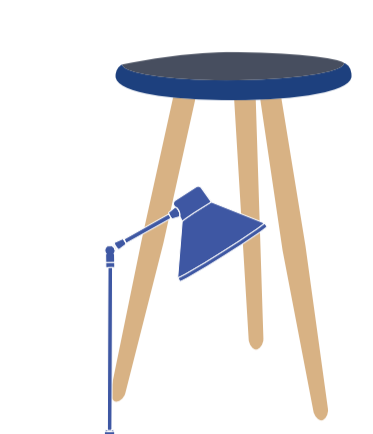
The playful Portobello lamp has an on-off touch function that coats an ambient light and was inspired by the Button lamp originally released in 1979.
By Habitat Designer Tom Sullivan

CANDLE
Small,
£8
Large,
£14
Multi Wick,
£18

Black Tea and Vetiver scented home fragrance in vibrant Habitat 60th blue vessels with signature packaging inspired by the archives, denoting the brand's history over the past six decades.
By Habitat Design Studio

REED
Diffuser,
£14

Black Tea and Vetiver scented home fragrance in vibrant Habitat 60th blue vessels with signature packaging inspired by the archives, denoting the brand's history over the past six decades.
By Habitat Design Studio



BOBBY
Table Light Red,
£26
Floorlight Multi,
£75

In a nod to Habitat's heyday back in the early 2000s, the Bobby light makes a comeback. The lighting's enduring appeal remains to this day, in vibrant multi-coloured combinations and both table and floor variants.
By Habitat Design Studio Archive

PRIMARIO
Set of 3 Stacking
Candle Holders,
£22

A nod to the Memphis Art Movement, to be stacked or used individually.
By Habitat Designer Rosa Mourfourn

YUMEMI
Mirror 50x45cm,
£75

Inspired by the tranquil contours of river stones, vibrant splashes of colour in a seamless gloss finish blend contemporary aesthetics and timelessness.
By Felix Conran

YUMEMI
Mirror 90x45cm,
£125

Inspired by the tranquil contours of river stones, vibrant splashes of colour in a seamless gloss finish blend contemporary aesthetics and timelessness.
By Felix Conran

YUMEMI
Wall Shelf Blue,
£20
Wall Shelf Pink,
£20

Inspired by the tranquil contours of river stones, vibrant splashes of colour in a seamless gloss finish blend contemporary aesthetics and timelessness.
By Felix Conran

YUMEMI
Side Table,
£75

Inspired by the tranquil contours of river stones, vibrant splashes of colour in a seamless gloss finish blend contemporary aesthetics and timelessness.
By Felix Conran

YUMEMI
Coffee Table,
£150

Inspired by the tranquil contours of river stones, vibrant splashes of colour in a seamless gloss finish blend contemporary aesthetics and timelessness.
By Felix Conran



RADICA
Vase With Handles,
£15

Influenced by the vibrant colour palette and mark-making of Habitat's 1980s 'Living with Colour' catalogue, handmade in Portugal, designed to uplift and inject a little joy into the home.
By Slavia Kamolyová

RADICA
Tall Vase Wide Base,
£25

Influenced by the vibrant colour palette and mark-making of Habitat's 1980s 'Living with Colour' catalogue, handmade in Portugal, designed to uplift and inject a little joy into the home.
By Slavia Kamolyová

RADICA
Yucca Cylinder,
£16

Influenced by the vibrant colour palette and mark-making of Habitat's 1980s 'Living with Colour' catalogue, handmade in Portugal, designed to uplift and inject a little joy into the home.
By Slavia Kamolyová

RADICA
Decorative Bowl,
£20

Influenced by the vibrant colour palette and mark-making of Habitat's 1980s 'Living with Colour' catalogue, handmade in Portugal, designed to uplift and inject a little joy into the home.
By Slavia Kamolyová

RECAST
Mug,
£5 Set of 4,
£20

Crafted using 40% post-consumer waste ceramics, with each piece meticulously hand-glazed.
By Habitat Design Studio

RECAST
Pasta Bowl, Set of 4,
£6 £24

Crafted using 40% post-consumer waste ceramics, with each piece meticulously hand-glazed.
By Habitat Design Studio

RECAST
Dinner Set 12pc,
£60
Cereal Bowl, Set of 4,
£5 £20
Dinner Plate, Set of 4,
£6 £24
Side Plate, Set of 4,
£5 £20

Crafted using 40% post-consumer waste ceramics, with each piece meticulously hand-glazed.
By Habitat Design Studio

XY60
Side Table Blue,
£150



The XY60 family of tables have been constructed using a material made from textile waste called Rezyrn® that has been developed by Plang, and invigorated by accents of colour from 1960s Habitat collections.
By Plang

XY60
Side Table Yellow,
£150



The XY60 family of tables have been constructed using a material made from textile waste called Rezyrn® that has been developed by Plang, and invigorated by accents of colour from 1960s Habitat collections.
By Plang

XY60
Coffee Table Blue,
£325



The XY60 family of tables have been constructed using a material made from textile waste called Rezyrn® that has been developed by Plang, and invigorated by accents of colour from 1960s Habitat collections.
By Plang

XY60
Coffee Table Yellow,
£325



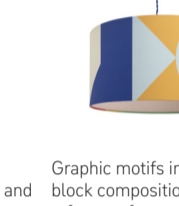
The XY60 family of tables have been constructed using a material made from textile waste called Rezyrn® that has been developed by Plang, and invigorated by accents of colour from 1960s Habitat collections.
By Plang

LEVI
Embroidered Cushion,
£20



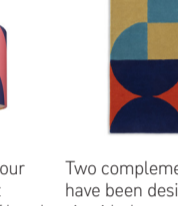
Inspired by Habitat catalogues from the 70s and 80s, and Margó's ongoing fascination with typography, incorporating the number '60' into the design was a nod to Habitat's anniversary.
By Margo Selby

LEVI
Printed Shade 45cm,
£38



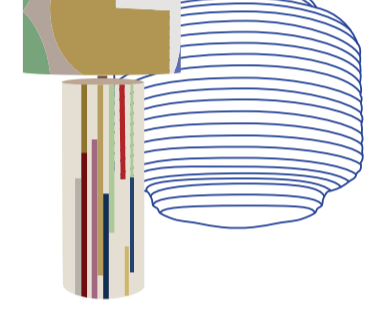
Graphic motifs in a colour block composition that reference fragments of hand drawn geometric patterns from Habitat's archive.
By Margo Selby

LEVI
Wool Rug 120x170cm,
£125 100% Wool



Two complementing rugs have been designed to sit with the cushions. A complementing rug for the Levi cushion brings the geometric print to life in large-scale form for impact.
By Margo Selby

KLEE
Face Cloth 2 Pack,
£4 100% Better Cotton



Margo Selby has brought her characteristic graphic patterns and joyful colour combinations to a series of soft cotton towels.
By Margo Selby

KLEE
Hand Towel Stripe,
£10 100% Better Cotton
Bath Towel Stripe,
£18 100% Better Cotton
Bath Sheet Stripe,
£28 100% Better Cotton



Margo Selby has brought her characteristic graphic patterns and joyful colour combinations to a series of soft cotton towels.
By Margo Selby

KLEE
Towel Bale Stripe,
£50 100% Better Cotton



Margo Selby has brought her characteristic graphic patterns and joyful colour combinations to a series of soft cotton towels.
By Margo Selby

KLEE
Printed Pillowcases Set of 2,
£12 100% Better Cotton



Margo Selby has brought her characteristic graphic patterns and joyful colour combinations to a series of soft cotton towels.
By Margo Selby

KLEE
Printed Bedset Single,
£30 100% Better Cotton
Printed Bedset Double,
£35 100% Better Cotton
Printed Bedset King,
£40 100% Better Cotton



Margo Selby has brought her characteristic graphic patterns and joyful colour combinations to a series of soft cotton towels.
By Margo Selby

KLEE
Table Lamp,
£95



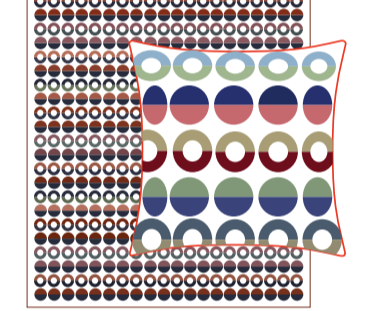
Inspired by the linear compositions hand woven on Margó's studio looms, the simplified patterns here pay homage to the bold and primary aesthetic of the Habitat archive from the 70s and 80s.
By Margo Selby

CIRRO
Papershade 45cm,
£5
Papershade 60cm,
£8



In a nod to Habitat's classic paper shades, the lightweight Cirro shade evokes dreamlike clouds. The soft curves give off a soft warm glow to create a cosy atmosphere.
By Habitat Designer D'Arby Mason

RONDA
Face Cloth 2 Pack,
£4 100% Better Cotton



Margo Selby has brought her characteristic graphic patterns and joyful colour combinations to a series of soft cotton towels.
By Margo Selby

RONDA
Hand Towel Circles,
£10 100% Better Cotton
Bath Towel Circles,
£18 100% Better Cotton
Bath Sheet Circles,
£28 100% Better Cotton



Margo Selby has brought her characteristic graphic patterns and joyful colour combinations to a series of soft cotton towels.
By Margo Selby

RONDA
Towel Bale Circles,
£50 100% Better Cotton



Margo Selby has brought her characteristic graphic patterns and joyful colour combinations to a series of soft cotton towels.
By Margo Selby

RONDA
Printed Jacquard Pillowcases Set Of 2,
£16 100% Better Cotton



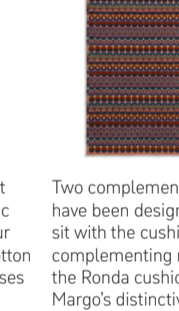
Margo Selby has brought her characteristic graphic patterns and joyful colour combinations to a series of soft cotton towels.
By Margo Selby

RONDA
Printed Jacquard Double Bedset Superking,
£75 100% Better Cotton



Margo Selby has brought her characteristic graphic patterns and joyful colour combinations to a series of soft cotton towels.
By Margo Selby

RONDA
Wool Rug 160x230cm,
£295 100% Better Cotton



Two complementing rugs have been designed to sit with the cushions. A complementing rug for the Ronda cushion brings Margó's hand decorated print to life in large-scale form for impact.
By Margo Selby

RONDA
Embroidered Cushion,
£20



The design brings together graphic design inspiration from the archives of Habitat catalogues from the 70s and 80s and Margó's own ongoing fascination with typography.
By Margo Selby

JACKSON
Pillowcases Set of 2,
£10 100% Organic Better Cotton



This bedlinen print was created from real paint splatters, complemented by the iconic 60th anniversary blue colourway.
By Habitat Design Studio

JACKSON
Bedding Set Toddler,
£18 100% Organic Better Cotton
Bedding Set Single,
£25 100% Organic Better Cotton



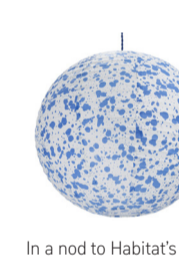
This bedlinen print was created from real paint splatters, complemented by the iconic 60th anniversary blue colourway.
By Habitat Design Studio

JACKSON
Bedding Set Double,
£30 100% Organic Better Cotton
Bedding Set King,
£35 100% Organic Better Cotton



This bedlinen print was created from real paint splatters, complemented by the iconic 60th anniversary blue colourway.
By Habitat Design Studio

JACKSON
Paper Shade,
£8



In a nod to Habitat's classic paper shades but updated in a Habitat 60th blue splatter print, the soft curves give off a soft warm glow to create a cosy atmosphere.
By Habitat Design Studio

JACKSON
Mug, Set of 4,
£4 £16
Small Bowl, Set of 3,
£4 £12



Inspired by Mediterranean pottery and crafts, the Jackson splatterware range is hand decorated in Portugal so that each piece is one-of-a-kind.
By Habitat Design Studio

JACKSON
Pasta Bowl, Set of 4,
£5 £20
Salad Bowl,
£15
Small Platter,
£18



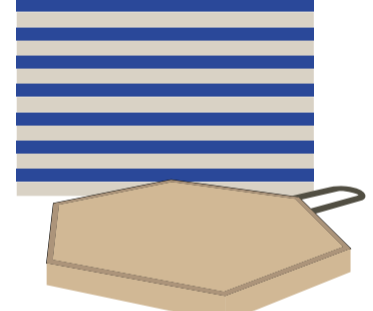
Inspired by Mediterranean pottery and crafts, the Jackson splatterware range is hand decorated in Portugal so that each piece is one-of-a-kind.
By Habitat Design Studio

JACKSON
Dinner Set 12pc,
£50
Cereal Bowl, Side Plate,
£4 £4
Dinner plate,
£5



Inspired by Mediterranean pottery and crafts, the Jackson splatterware range is hand decorated in Portugal so that each piece is one-of-a-kind.
By Habitat Design Studio

BLOCK CHOPPING BOARD
FSC Acacia wood,
£16
FSC Ash wood,
£22



One flat side for chopping, and a framed ridged reverse for serving. The hexagonal shapes stack next to each other in geometric tessellating patterns for contemporary tablescaping.
By Habitat Designer David Hutchison

STOVE
Cast Iron Griddle Pan,
£28
Cast Iron Sauuté Wok Pan,
£32
Cast Iron Oval Casserole,
£50



Originally created in 2007 from cast iron. Heavy, robust and durable for everyday cooking.
By Habitat Design Studio Archive

POULET
Chicken Brick,
£20



First introduced in 1964 and made from terracotta, the Chicken Brick has been reimagined for modern-day cooking in a sleek matte black glaze, designed to steam cook the food in its own moisture.
By Habitat Designer James Cottingham
Inspired by the Habitat Archive

MAUBEC
Tea Towels 3 Pack,
£8



Maubec is a range of coordinated washed cotton kitchen and table linen in vivid blue hues and playful print and pattern.
By Habitat Designer Denise Moloney

MAUBEC
Kitchen Apron,
£12



Maubec is a range of coordinated washed cotton kitchen and table linen in vivid blue hues and playful print and pattern.
By Habitat Designer Denise Moloney

MAUBEC
Runner 33x220cm,
£25
Tablecloth 180x240cm,
£25



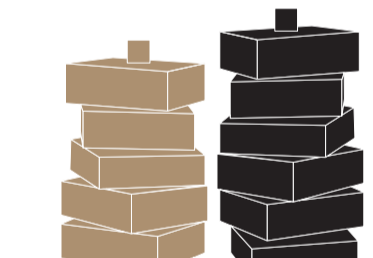
Maubec is a range of coordinated washed cotton kitchen and table linen in vivid blue hues and playful print and pattern.
By Habitat Designer Denise Moloney

MAUBEC
Place Mats Set of 4,
£12



Maubec is a range of coordinated washed cotton kitchen and table linen in vivid blue hues and playful print and pattern.
By Habitat Designer Denise Moloney

BEBOP
Tumbler,
£4
Tumbler,
£16 Set of 4,



Relaxed and elegant blown glassware in organic, curved forms which are soft to the hand and perfect for modern, everyday living.
By Tord Boortje

BEBOP
High Ball,
£4.50
High Ball,
£18 Set of 4



Relaxed and elegant blown glassware in organic, curved forms which are soft to the hand and perfect for modern, everyday living.
By Tord Boortje

WINE GLASS
Wine Glass Set of 4,
£20



Relaxed and elegant blown glassware in organic, curved forms which are soft to the hand and perfect for modern, everyday living.
By Tord Boortje

BEBOP
Cocktail Set,
£15



Relaxed and elegant blown glassware in organic, curved forms which are soft to the hand and perfect for modern, everyday living.
By Tord Boortje

BOOGIE WOOGIE
Cocktail Set,
£28



Elegant nesting cocktail kit seamlessly designed with utilitarian functionality in mind.
By Tord Boortje

SALT & PEPPER
Salt & Pepper Set,
£24



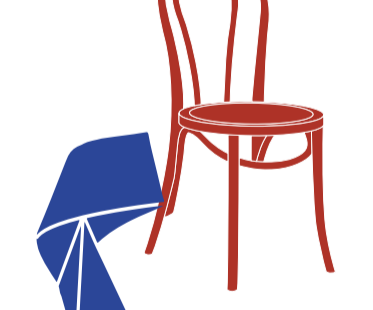
Elegant nesting cocktail kit seamlessly designed with utilitarian functionality in mind.
By Tord Boortje

CRATE
Fruit Bowl,
£16



Crate is designed by Habitat Head of Design, Andrew Tanner and takes inspiration from the rounded packaging of fruits and serves as a platter for innovative food presentation. Originally designed by Andrew in 1999, Crate is handmade in Portugal using earthenware ceramic.
By Habitat Head of Design Andrew Tanner

LARSA
Chairs Set of 2,
£160



This chair is a time-honoured Habitat icon, and this latest incarnation was introduced in 2016, now updated in a punctured red hue.
By Habitat Design Studio Archive

LARSA
4-6 Dining Table Red,
£300



A new addition to the Larsa collection, the dining table is a contemporary take on the classic chair seen throughout European cafes and bistros.
By Habitat Design Studio

TAM TAM
Plastic Stool Red,
£18
Plastic Stool Blue,
£18